

# Your guide to Council Tax 2024/25



**Hull**  
City Council

[hull.gov.uk/counciltax](http://hull.gov.uk/counciltax)

# YOUR VOTE, YOUR SAY, YOUR HULL.



**Vote in the Local Elections and Police and  
Crime Commissioner Elections 2 May 2024**

## Voting at a polling station? Do you have your photo ID ready?

Make sure you are ready to vote in May by checking you have an accepted form of ID. Accepted forms of ID include:

- a UK, European Economic Area (EEA) or Commonwealth passport;
- a UK, EEA or Commonwealth drivers' licence;
- cards with a PASS Mark;
- some concessionary travel passes, such as an older person's bus pass.

Voters can use expired ID if they are still recognisable from the photo.

A full list of acceptable ID can be found here:  
[www.gov.uk/apply-for-photo-id-voter-authority-certificate](http://www.gov.uk/apply-for-photo-id-voter-authority-certificate)

Anyone who does not have one of the accepted forms of ID can apply for free ID online at [www.voterauthoritycertificate.service.gov.uk](http://www.voterauthoritycertificate.service.gov.uk) or by completing a paper form.

Visit [www.electoralcommission.org.uk/voterID](http://www.electoralcommission.org.uk/voterID), call 0800 328 0280, or scan the QR code below to find out more.

Don't forget, you can also choose to vote by post!

Apply online at <https://www.gov.uk/apply-postal-vote> or request a paper form by:

- Calling us on: 01482 300 302
- Emailing us at: [electoral.services@hullcc.gov.uk](mailto:electoral.services@hullcc.gov.uk)



## Introduction

This booklet accompanies your annual Council Tax bill. We have sent this to help explain how your Council Tax is spent. Your enclosed bill shows you how much you need to pay this year. It is based on the value of your home and the number of people who live there. We work hard to keep your Council Tax bill as low as possible and to ensure that we spend the money wisely on the things that are most important to you and the city.

The last couple of years have been extremely challenging. The cost of living crisis has had a huge impact on our residents and brought challenges to councils across the country.

On the following pages you'll find much more detail about the money the Council receives and how we plan to spend money in the year ahead.

This includes additional investment to support local high streets and make our communities cleaner, safer and greener.

The Council continues to provide residents with a huge range of services and, importantly, works hard to keep you safe whilst building for the future.

The Council Tax that we collect from households across the city only pays for 22% of the cost of running our services. The rest of our funding comes from the Government and other sources.

Unfortunately, an increase in Council Tax is necessary as it reflects the current economic environment and significant rising costs of delivering services. Each year, the Council agrees a budget for the year, and this sets the amount to be collected from your Council Tax.

Your enclosed bill will provide you with the details for your household and the following pages provide further explanation and details of where the money goes.

### Further information

For more details about any of the information in this document visit our website [hull.gov.uk/counciltax](http://hull.gov.uk/counciltax)



**Did you know that Hull City Council may provide more than 400 different services to you and your family?**

**WE PROVIDE CARE AND SUPPORT FOR MORE THAN**

**8,000** VULNERABLE ADULTS AND MORE THAN

**3,500** CHILDREN AND THEIR FAMILIES



**WE MAINTAIN MORE THAN**

**455 MILES** OF ROAD

**IN 2023, WE CLEANED 96,300 GULLIES**



**WE EMPTY**



**170,000**

**BINS EVERY WEEK**

**WORKING TOGETHER OUR OVERALL RECYCLING RATE IS**



**48%**

**WE RESPOND TO**



**99%** OF ALL ANTI-SOCIAL BEHAVIOUR

**CASES WITHIN 2 DAYS**

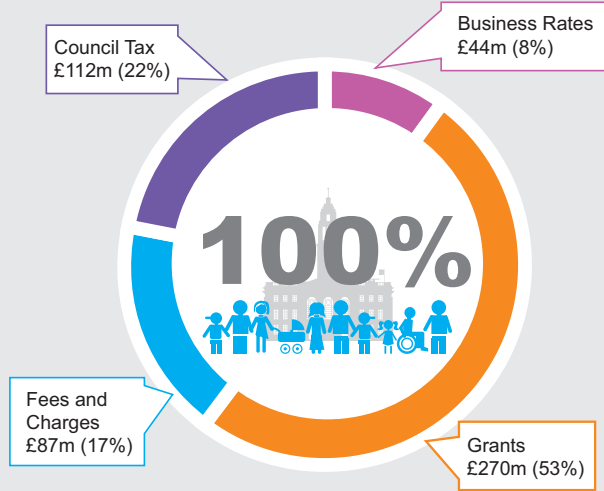
**And much more!**



# How the Council is funded

**22% of the Council's budget is funded by Council Tax. 78% of the funding comes from the Government and other sources.**

**Council Tax will rise by 4.99% in 2024/25.**



## Reduced funding

**Like many councils across the country, Hull City Council is having to make very difficult decisions about service provision and local Council Tax levels. Whilst demand for our services and the costs of providing them is increasing, particularly social care and our funding from Government, which makes up over half our budget, has decreased substantially in recent years.**



Each year we publicise our annual statement of accounts. This will give you clear information about our finances.

We remain committed to balancing the needs of the city and our most vulnerable residents whilst ensuring every pound is spent wisely.



# How we spend your Band A Council Tax

\*Please remember that Council Tax only funds 22% of our costs.

Children's  
Social Care



£275

Council Education  
Functions &  
Youth Services



£14

Culture, Leisure &  
Tourism



£14

Supporting Business  
& Creating Jobs



£15

Road Maintenance &  
Street Lighting



£43

Public Transport



£32

Libraries



£9

Public Health



£81

Adult Social Care



£397

Communities



£27

Parks & Open Spaces



£9

Treasury  
Management &  
Pensions



£75

Street Cleaning,  
Waste Collection &  
Disposal



£71

Environmental &  
Building Services



£41

Council Tax, Business  
Rates & Benefits



£18

Corporate Services



Hull  
City Council

£12

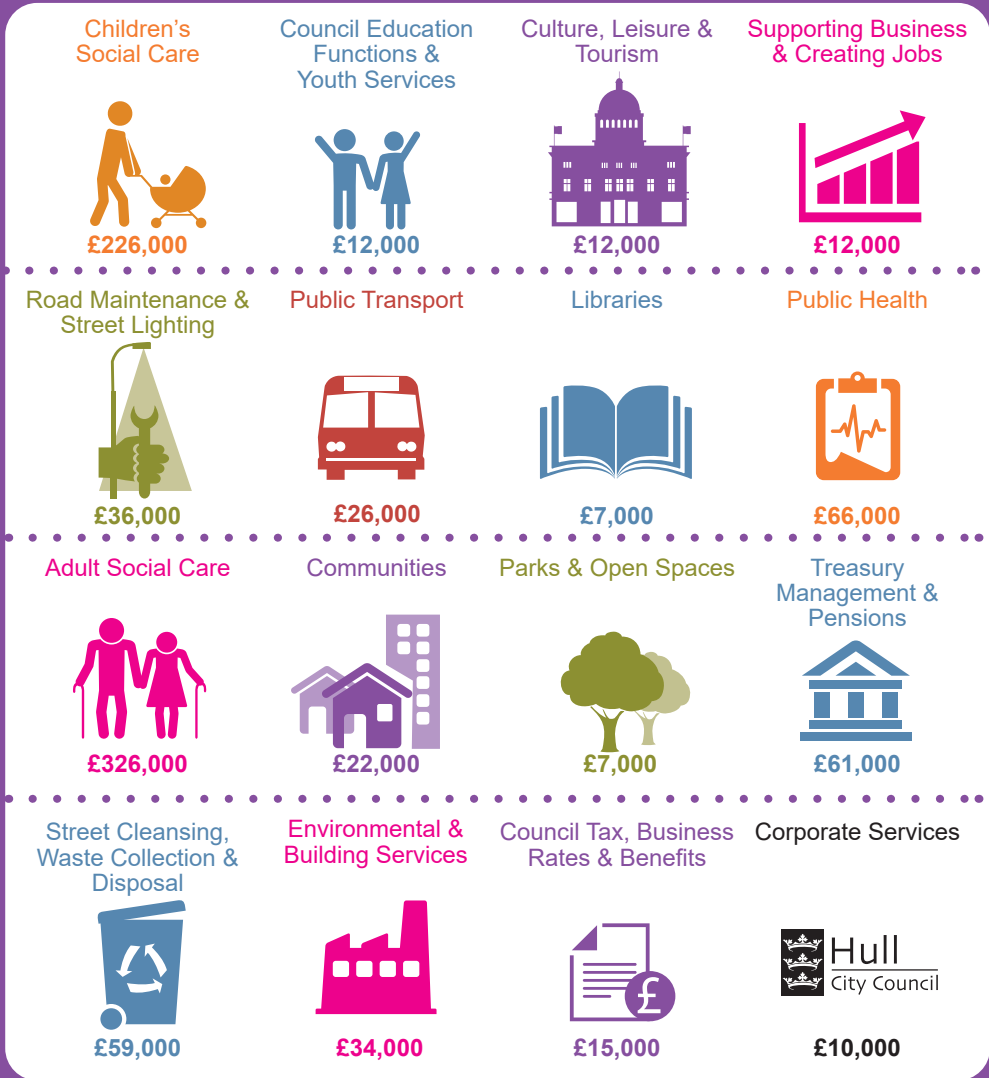
## Total = £1,133

\*Based on a Band A property for 2024/25.  
89% of the properties in Hull are in  
Council Tax Band A & B. The total figure  
does not include the money you pay to  
support the Police & Fire Services.



Hull  
City Council

# What is the daily cost of delivering council services to the people of Hull each day?



**Total = £931,000**

**#YourCouncil**



# Supporting your family

Visit **[www.familyhubshull.org.uk](http://www.familyhubshull.org.uk)**  
and access play and learning  
activities, family support, health  
services and more.



**Hull**  
City Council



# Are you missing out?



You may be able to get help to pay your Council Tax, to claim a Council Tax reduction go to [www.hull.gov.uk/counciltaxhelp](http://www.hull.gov.uk/counciltaxhelp)

Direct debit is the easiest way to pay your Council Tax, go to [www.hull.gov.uk/ctaxwaystopay](http://www.hull.gov.uk/ctaxwaystopay) to find out how to set up a direct debit.



**Hull**  
City Council



**Hull**  
City Council

# NEW AND IMPROVED WEBSITE

**hull.gov.uk**



- Now quicker and easier to use
- More services online than ever before
- 24/7 chatbot assistance
- Features live advisor support\*
- Personalised bin checker
- Improved accessibility tools



Scan now



\*available Monday –  
Friday 9am – 4.30pm to answer questions.



**Could I become a  
foster carer?**  
We're with you every  
step of the way



**Hull**  
City Council

call: 01482 612 800, email: [fostering@hullcc.gov.uk](mailto:fostering@hullcc.gov.uk)

# Winter is almost over but

**#HullTogether**

We'll support you with the **cost of living crisis**

Food

Fuel and Energy

Health

Money and Debt

Employment

Housing

And much more...



**Visit:** [www.hull.gov.uk/costofliving](http://www.hull.gov.uk/costofliving)

**Email:** [costofliving@hullcc.gov.uk](mailto:costofliving@hullcc.gov.uk)

**Call:** 01482 300 303



**Hull**

City Council

working in partnership