

Next Steps

for 16 - 18
year olds

Information inside
on education and
training for young
people 16 - 18 (and
up to age 25 if you
have an EHCP)

INFORMATION
SUPPORT IMPARTIAL
CAREERS GUIDANCE



Table of Contents

Page 3	Connexions Service
Page 4	Study Programmes
Page 5	Apprenticeships
Page 6	Supported Internships
Page 7	Levels Of Study Guide
Page 8	All About Career Sectors
Page 10	Useful Websites
Page 11	>log on move on>
Page 12	Our Contact Details

Connexions

Connexions are a passionate team of people committed to inspiring and supporting young people to achieve their potential. Our team are experienced information, advice and guidance specialists who work with 14 to 18 year olds (or young people with an EHCP up to age 25). We help young people navigate education, training and employment opportunities.

Guide

We can help you feel more confident about your future and the choices you need to make. With individually tailored one to one guidance, clearly outlining career routes and learning pathways.

Advocacy

If you need someone to speak on your behalf to a training provider or college about accessing opportunities or any other issues you are facing, we can help.

CV, Cover Letter and Job Prep

Advise and support you with creating a CV, covering letter and preparation for interviews.

Inform

Provide information to broaden your horizons and develop your career ideas.

Benefit Advice

Provide benefit advice for your circumstances or signpost you to other agencies.

Discover

We will share details of open events, taster sessions and training opportunities.

Your Direct Link

We have links to a network of agencies we can refer to if you find yourself facing (short or long term) barriers preventing you from progressing into education, training or employment.

Study Programmes

Study programmes are delivered at a range of post 16 settings. The learning environments can vary from large bustling colleges to smaller training centres offering reduced class sizes.

There are a wide range of study programmes to choose from.

Re-engagement Programmes – these are supportive study programmes designed to help build self-esteem, develop independence and team working skills. They can include work experience or the opportunity to try different job areas. A re-engagement programme is a good choice for those who haven't been in education and training for a while or for those who need to improve their employability skills to access work and learning. These types of programmes are offered by F.E. colleges and some smaller training providers.

Full-time college courses - Local colleges offer different types of qualifications.

- **Academic subjects** (for example, A levels) theory-based study involving assessment through exams.
- **Vocational or work-related subjects** (for example, BTECs, CTECs, City & Guilds and T-levels to name a few). These may include a mixture of coursework, ongoing assessments and/or exams.

Which qualification you study could depend on; the exam results you achieve and the entry requirements set out by individual education and training providers. Choosing a study programme could also depend on the way you prefer to learn (for example, through exams, coursework, or in a workplace) and it should also hinge on what career ideas you have and if the learning pathway you are considering provides a route into the career you want.

Young people can choose to study several subjects together to create a full-time timetable (usually 3 subjects) or they can opt to study one main subject. A levels and vocational subjects can be studied in combination. College websites will provide information on entry requirements and subjects available – refer to the Levels of Study Guide (page 7) of this booklet.

Academic or vocational qualifications can provide entry into higher education (HE), employment, and training opportunities. We have listed job sectors in this booklet (page 8/9) to make you aware of what's available. To explore HE, employment and training look on the Useful Websites (page 10).

Study Programmes can combine gaining qualifications in specific vocational sectors with English or maths if they haven't already been achieved at level 2 (GCSE grade 4/C or equivalent). They can include enrichment activities tailored to individuals needs e.g. work experience, volunteering, participating in sports or exploring and developing new interests.

Apprenticeships

Learning
Pathways!

Apprenticeships are not age restricted, it is possible to progress onto an apprenticeship after year 11, college or as an adult. Employed apprentices spend most of the time with their employer learning in a workplace, they also get dedicated time to study during the week. This may involve a day or block release at a training centre to work on achieving apprenticeship standards and vocational qualifications. School leavers can progress onto Level 2 (Intermediate) or Level 3 (Advanced) apprenticeships.

- An **intermediate apprenticeship** is equivalent to five good GCSE passes and can provide entry into employment or onto an advanced apprenticeship.

- **Advanced apprenticeships** are equivalent to achieving two A levels. For those who want to gain further qualifications, apprenticeships can provide entry onto higher education programmes, Higher (Level 4-5) or Degree (Level 6) apprenticeship training or employment in a related job sector.

If you don't already have GCSEs in English and maths when you start your level 2 apprenticeship, you will need to study functional skills English or maths to achieve level 2 (GCSE equivalent).

For details on which level, you could study on refer to our Level of Study table (page 7).

Supported Internships

Learning
Pathways!

Supported Internships are for young people who really want to work and are work ready with an EHCP (Education, Health, and Care Plan). Most supported interns are aged 18-24 nearing the end of their education pathway.

Supported Internships (S.I.) are workplace based educational programmes, they can last up to a year and include one or more work experience placements. Interns gain valuable experience in a real workplace; they are supported by a job coach to help them learn the job role. The primary aim of supported internships is to provide young people with EHCPs the experience and skills they need to help them gain employment.

For more information, please look on Hull City Council Local Offer website- hull.mylocaloffer.org

Levels Of Study Guide

Level	Academic Route	Vocational Route	Applied / Work Route	
8	Doctorate (PhD)		NVQ 8	
7	Masters Degree (MA)		Degree Apprenticeship / NVQ 6 and 7	
6	Bachelors Degree (BA or BSc)			
5	Foundation Degree (FD)	Higher National Diploma (HND)	Higher Apprenticeship / NVQ 4 and 5	
4	Higher National Certificate (HNC)			
3	A Levels	T Levels	BTEC Diploma BTEC Certificate	Advanced Apprenticeship / NVQ 3
2	GCSE Grades 4-9	BTEC First Diploma	Intermediate Apprenticeship / NVQ 2	
1	GCSE Grades 1-3	Foundation Diploma	NVQ 1	
Entry Level	Entry Level 1, 2, and 3 Skills For Working Life Qualifications			

All About Career Sectors

Career sectors are classifications for occupations and industries with similar purposes or work. **Understanding your desired career's sector gives you insights into how the economy operates and the industry's specific goals.**



Business and Finance

Jobs can include

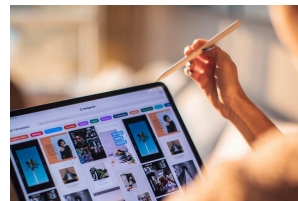
Office Administrator
Digital Marketer
Accountant
Bank Manager
Human Resources Adviser
Auditor



Retail and Customer Service

Jobs can include

Sales Assistant
Store Manager
Visual Merchandiser
Customer Service Adviser
Advertising Executive



Creative Media and Digital

Jobs can include

Stage Manager
TV Producer
Blogger / Vlogger
Multi Media Designer
Animator



Manufacturing

Jobs can include

Production Technician
Sign Maker
Operation Manager
Forklift Truck Driver



Hair and Beauty

Jobs can include

Hair stylist
Beautician
Tattooist
Image Consultant
Special Effects (MUA)



Science and Research

Jobs can include

Astronaut
Chemist
Environmental Scientist
Laboratory Technician
Biomedical Scientist



Health and Social Care

Jobs can include

- Care Worker
- Nurse
- Midwife
- Youth Worker
- Social Worker
- Dental Hygienist



Public Sector

Jobs can include

- Soldier
- Police Officer
- Fire Fighter
- Local Government Officer
- Prison Governor



Construction

Jobs can include

- Joiner
- Electrician
- Bricklayer
- Plumber
- Architect
- Site Manager



Engineering

Jobs can include

- Aerospace Maintenance Technician
- CAD Technician
- Chemical Engineer
- Electrician
- Marine Engineer
- Motor Vehicle Technician



Hospitality and Food

Jobs can include

- Baker
- Chef
- Event Planner
- Food Scientist
- Microbrewer
- Restaurant Manager
- Tour Guide



Renewables

Jobs can include

- Biomass Boiler Technician
- Environmental Consultant
- Heating & Ventilation Engineer
- Nuclear Engineer
- Recycling Operative
- Urban Planner

For more information...

- Scan the QR code to use >log on | move on> to research career ideas, view courses and apprenticeships www.logonmoveon.co.uk
- Scan the QR code for information on local labour market information www.skillshullandeastyorkshire.co.uk



SCAN ME



SCAN ME



Useful Websites



Career Websites

- www.logonmoveon.co.uk
- www.nationalcareers.service.gov.uk
- www.icould.com



Apprenticeships & Training

- www.gov.uk/apply-apprenticeship
- www.amazingapprenticeships.com
- www.notgoingtouni.co.uk



Higher Education

- www.ucas.com
- www.prospects.ac.uk
- www.theuniguide.co.uk



Labour Market Information

- www.skillshullandeastyorkshire.co.uk
- www.lmiforall.org.uk



Volunteering Opportunities

- www.gov.uk/volunteering
- www.time2volunteer.org
- www.doit.life/volunteer

> Log on | move on >



Everything **you** need to know about local **education**, **training** and **apprenticeship opportunities!**

With >log on | move on> you can:

Search and apply for local courses and apprenticeships.

Find open events and taster days.

Learn more about yourself; your strengths, skills, interests and aspirations to boost your confidence and employability.

Research your choices to 'Prepare for Adulthood'.



www.logonmoveon.co.uk

My Notes

.....

.....

.....

.....

.....

.....

.....

.....

.....

.....

To discuss your options in more detail you can make an appointment with a YPSE adviser by contacting us on-

01482 615 223
connexions@hullcc.gov.uk
Kenworthy House,
98-104 George Street Hull, HU1 3DT

   
@YPSEHullCityCouncil

